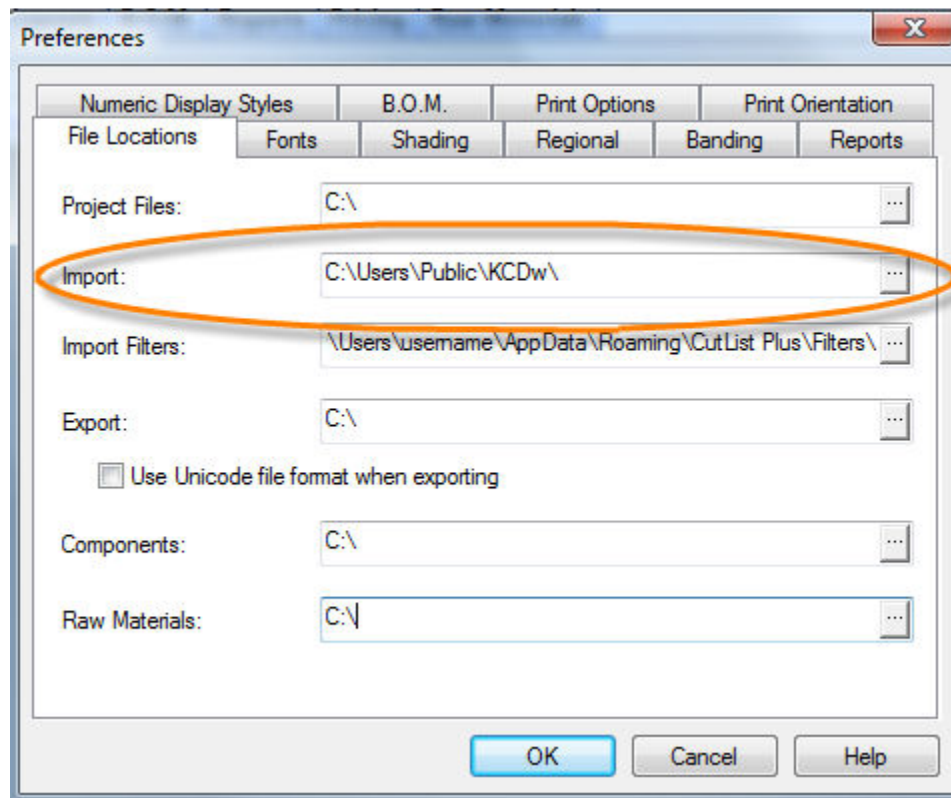


KCDw Import Procedure for CutList Plus 2009 Platinum Edition

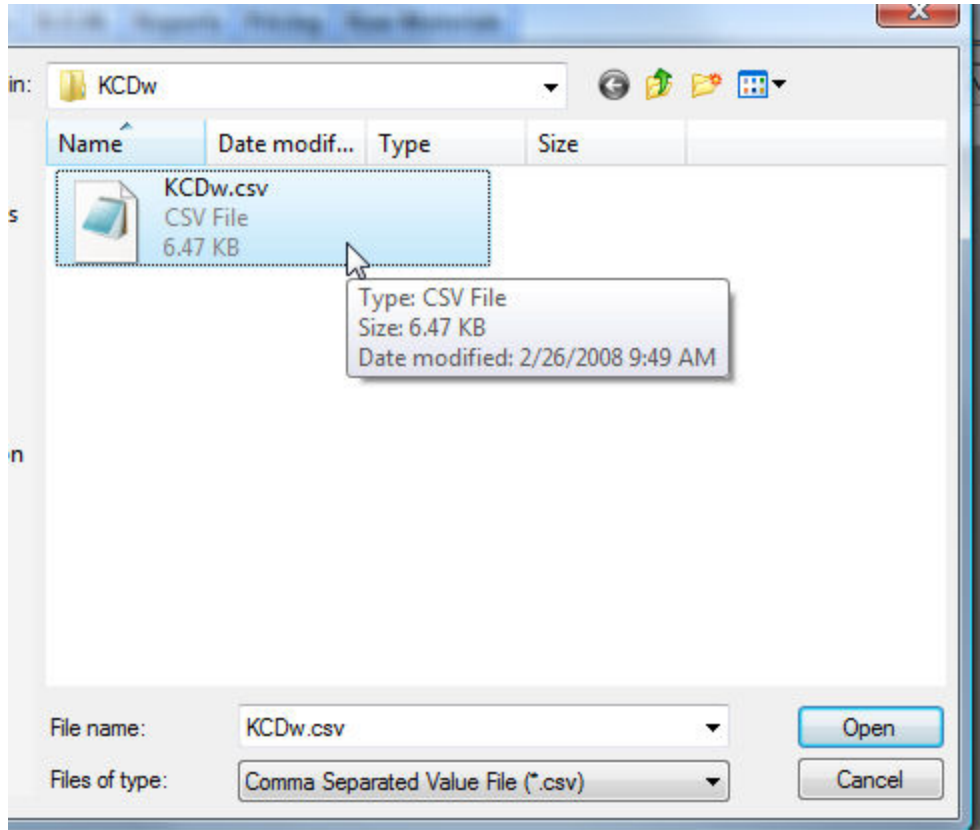
These instructions have two parts. The first section describes the initial setup that is only required one time. Starting on page 6 are the instructions for the import process each time after you have completed the setup.

Initial (One-Time) Setup

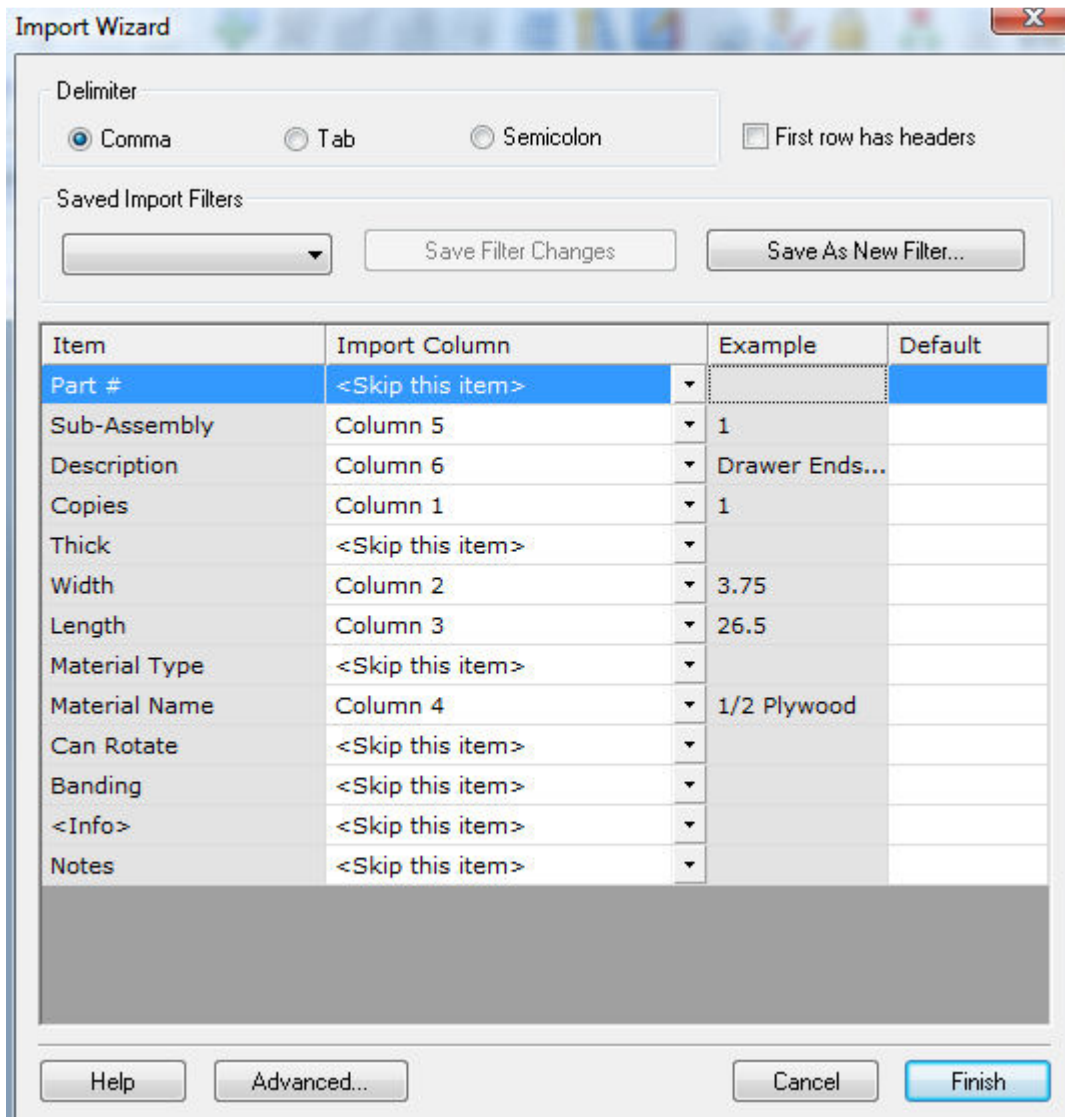
Step 1	Why?	Notes
Go to Settings>General Preferences... (File Locations) and change the Import folder to the location that KCDw exports data to.	KCDw stores the parts list that it exports in this location. You have to tell CutList Plus where to look for the file that you want to import.	You need to ask KCDw where this is, since it depends on what version of KCDw you are using.



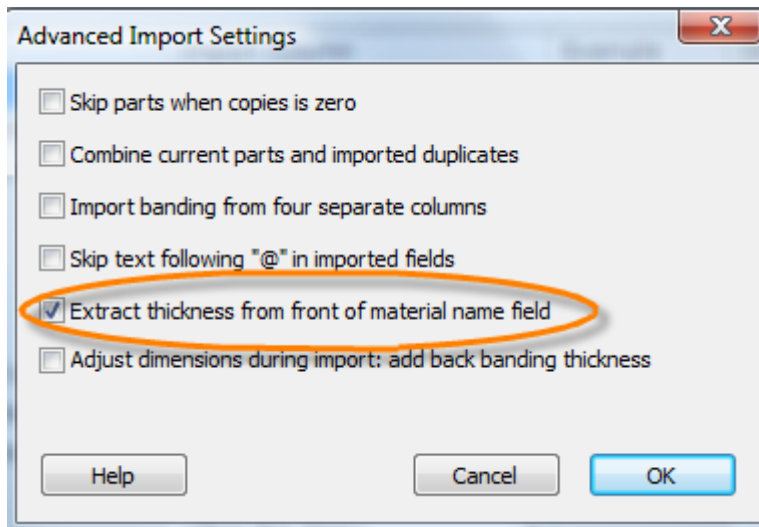
Step 2	Why?	Notes
Go to File>Import... and open the file named "KCDw.csv".	This is the file exported by KCDw.	At this point, we are setting up the Import Wizard. We just need a test file from KCDw to get the settings right.



Step 3	Why?	Notes
Configure the Import Wizard as shown below.	These settings tell CutList Plus how to understand the file that was created by KCDw.	This assumes 3/4 inch is the most common thickness among the parts being imported. You can change this as needed by adjusting the "Default" value for "Thick".

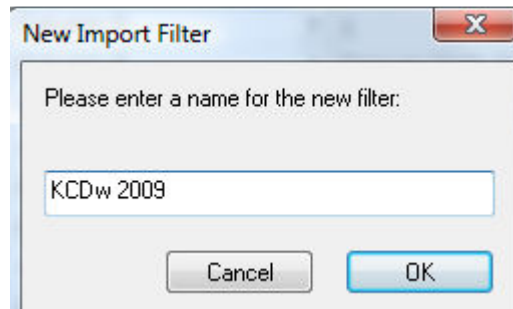
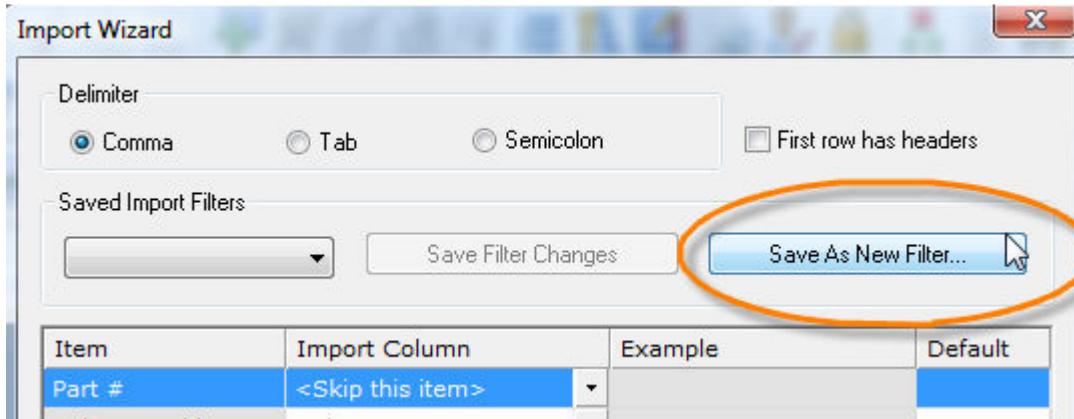


Step 4	Why?	Notes
Click the "Advanced..." button and configure as shown below.	KCDw does not export the thickness of parts. Instead, it embeds the thickness as the beginning of the material name. The setting below tells CutList Plus to extract that information and correct the material name.	



Notice that KCDw does not export the material type (i.e., Rough Lumber, Dimensioned Lumber, Sheet Good, Labor, Other Item). CutList Plus will search through all materials, trying to find a match based on the material name provided by KCDw. If it cannot find a match, CutList Plus will assume the material is a Sheet Good. If that is wrong, you will have to adjust things after you import the parts.

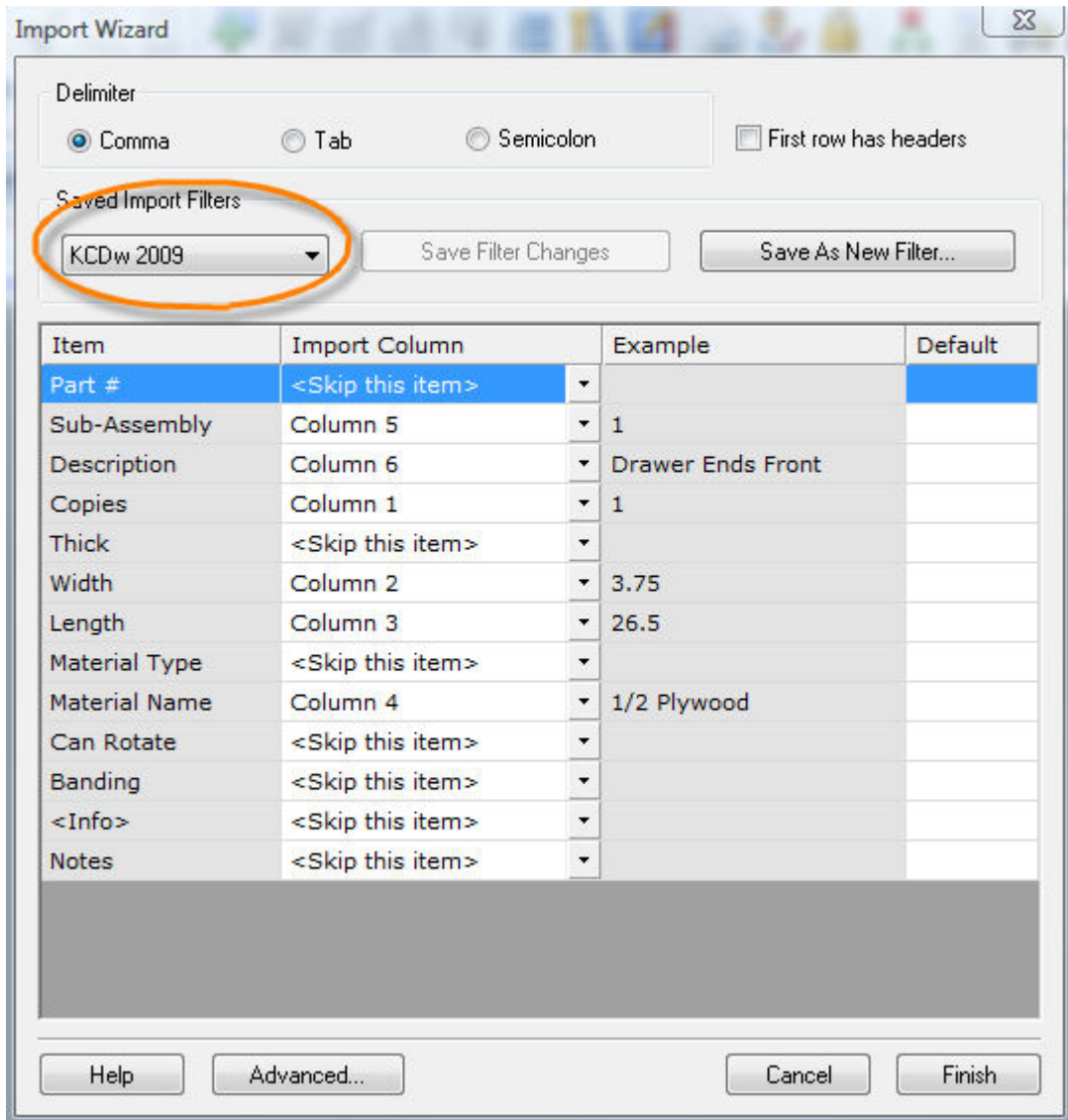
Step 5	Why?	Notes
Click the "Save As New Filter..." button and give the filter any name you choose. (In the screenshot here, it was named "KCDw 2009".)	This stores your settings on your PC's hard drive, so you won't have to type them in next time.	You can save a variety of import filters, each with different default thickness values, as needed.



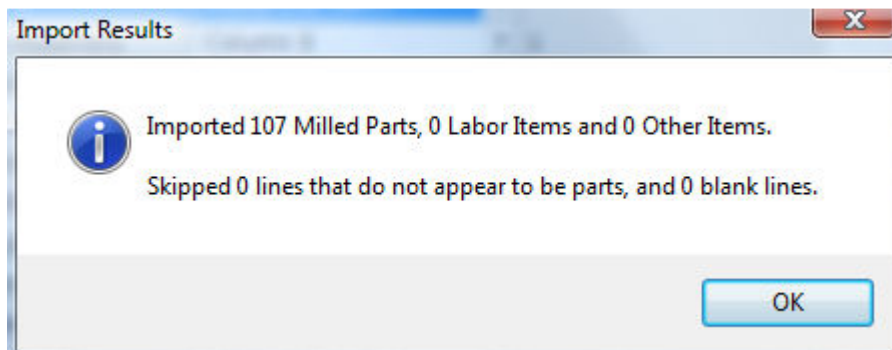
This completes the initial setup. You are now ready to import your list of parts.

Import Process

1. Go to **File>Import...** and open the file named "KCDw.csv".
2. Choose the KCDw Import Filter that you saved earlier (if it is not already selected).



3. Click "Finish". You will get a message telling you how many parts were imported.



4. If any of the imported material types are wrong in the parts list, now is the time to edit them.
5. Notice that KCDw material names may be different from what you have used in CutList Plus. You will need to either rename your CutList Plus materials, or edit your parts list to change the material names.
6. Make sure your Raw Materials list has the appropriate stock sizes for all the material names used in your project.

You can now optimize your parts that have been imported from KCDw!

Skipped Parts? Check that your Raw Materials are set up correctly. This is almost always the cause of the problem.